

Transposition of the Great Arteries in Pregnancy: Outcomes of a combined Cardiac Antenatal clinic

Ulivi G¹, Oliver J², Simms A², Everett T¹

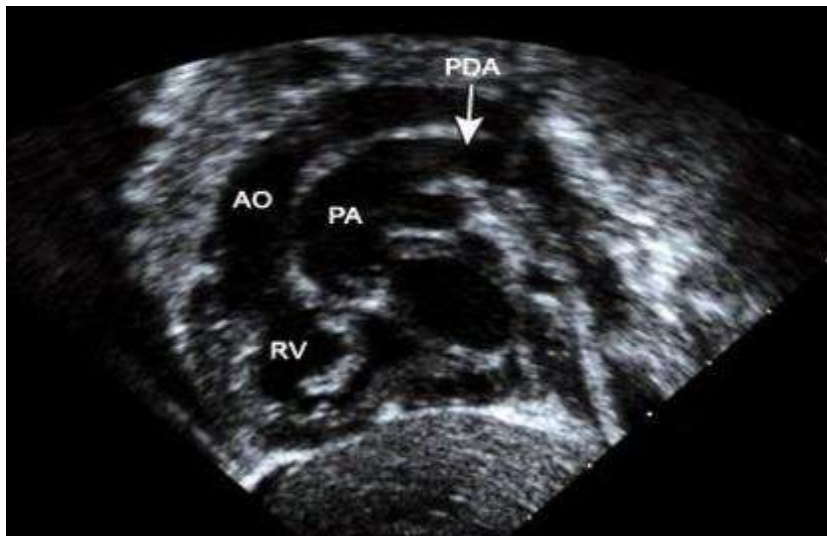
1. Department of Obstetrics and Fetal Medicine, Leeds Teaching Hospitals NHS Trust, Leeds, UK
2. Department of Adult Congenital Cardiology, Leeds Teaching Hospitals NHS Trust, Leeds, UK

Background

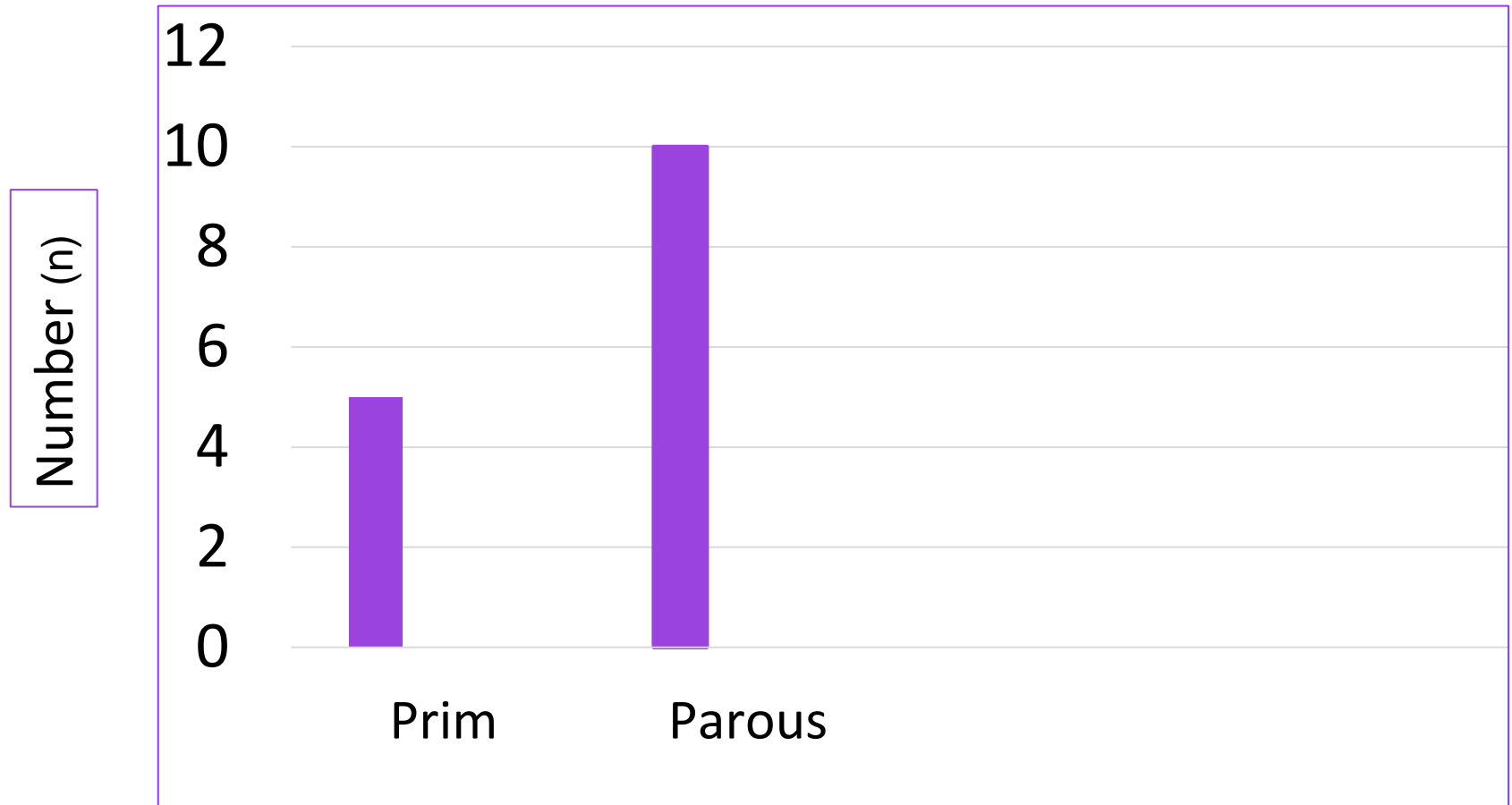


Methods

Data was collected retrospectively for all pregnant women with TGA between 1st January 2014 and 1st January 2017.



Parity



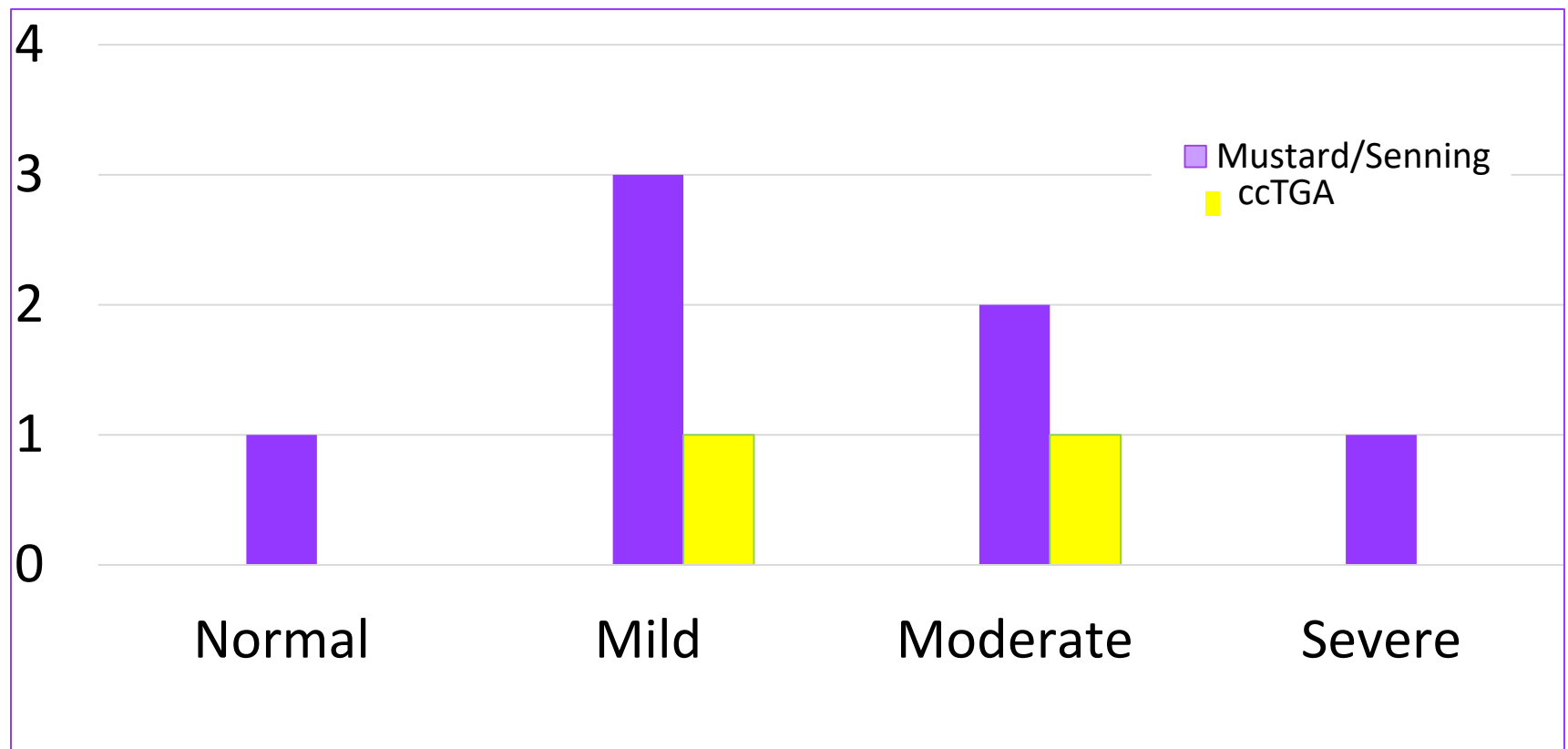
Results

We identified 15 women with TGA (23-34 years)

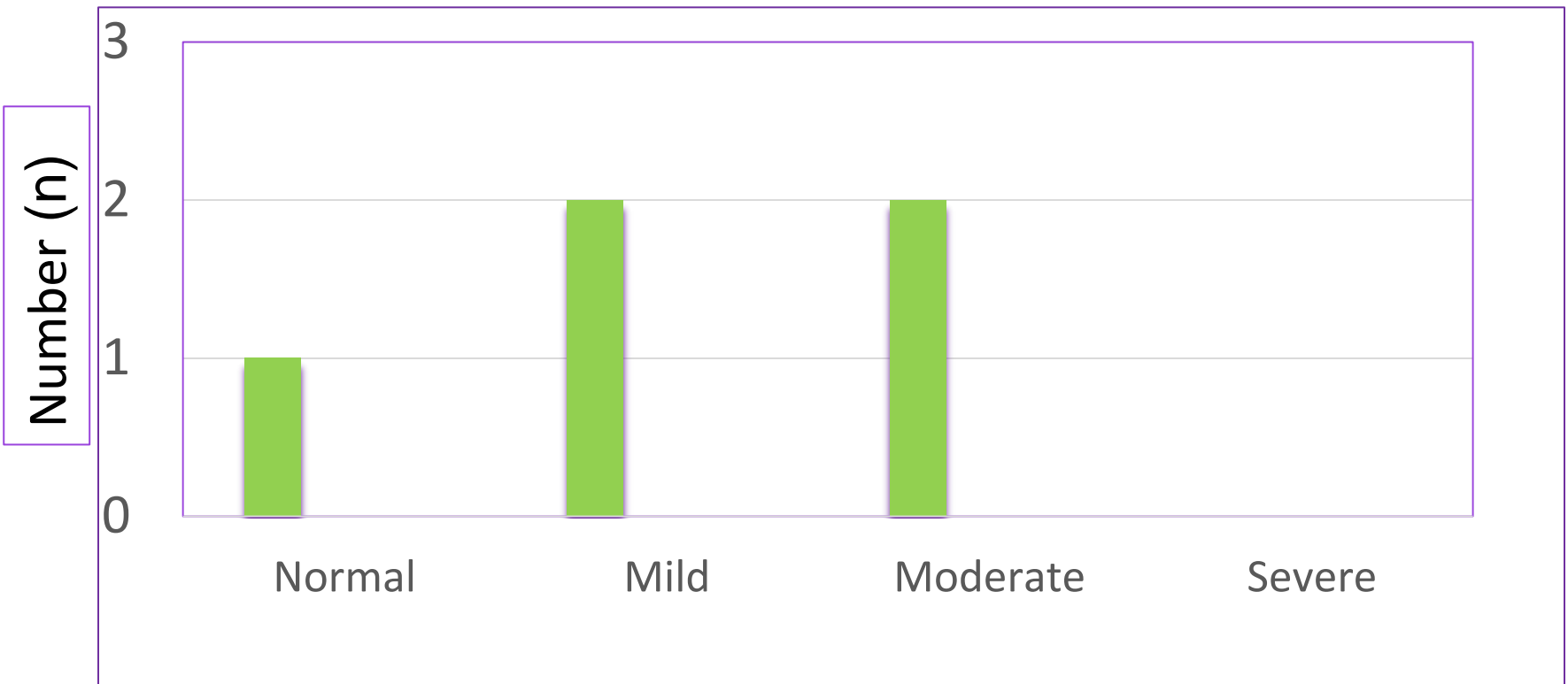
- ccTGA-3

Corrective Surgery	Number (n)
Senning procedure	5
Mustard procedure	2
Arterial Switch procedure	5

Systemic Ventricular Impairment-ccTGA, Mustard, Senning



Left Ventricular Impairment- Arterial Switch Procedure



Cardiac Complications

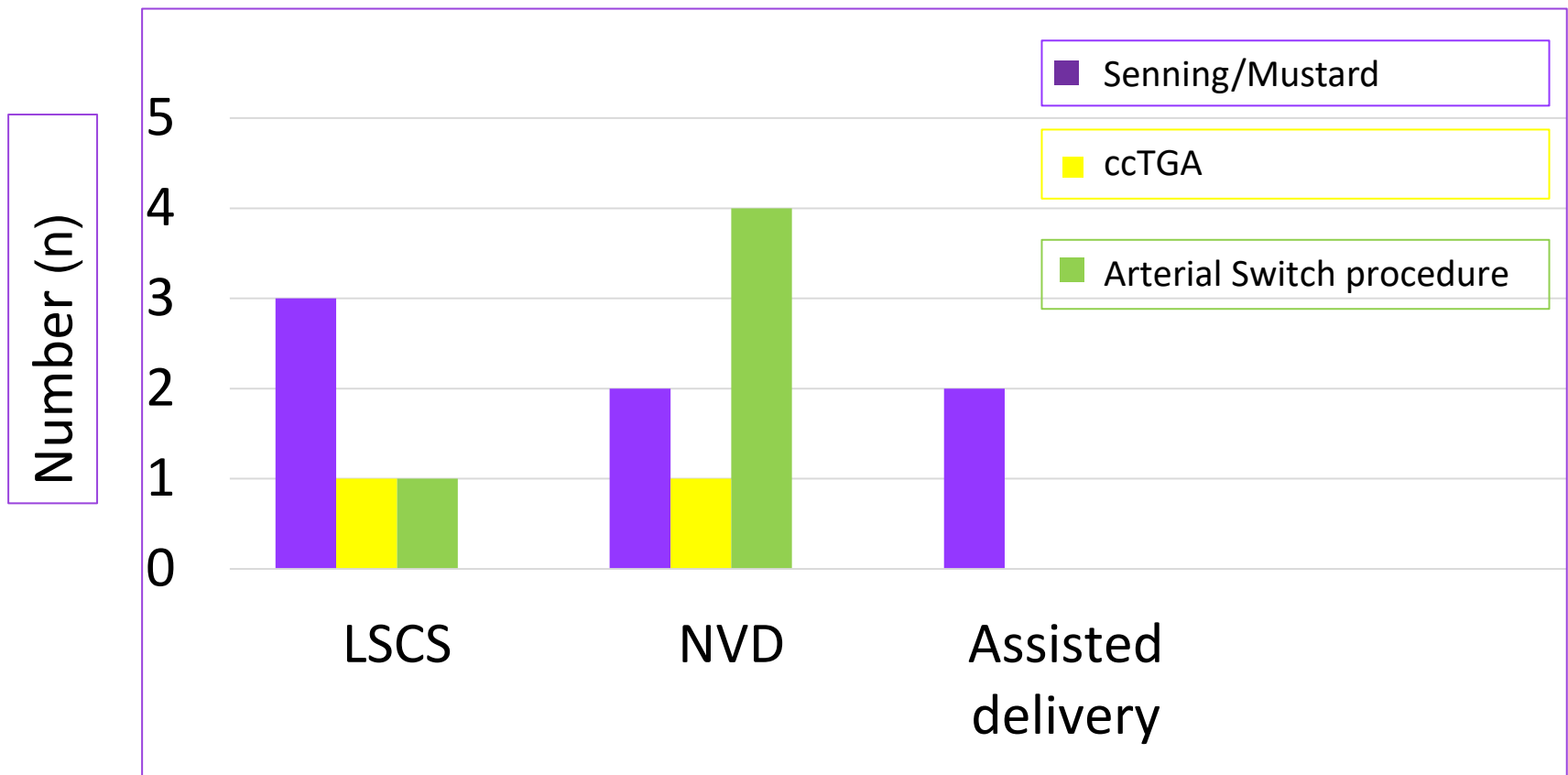
- Most coped well
- No deaths
- No significant episodes of arrhythmia
- 1 case deteriorated

Fetal Complications

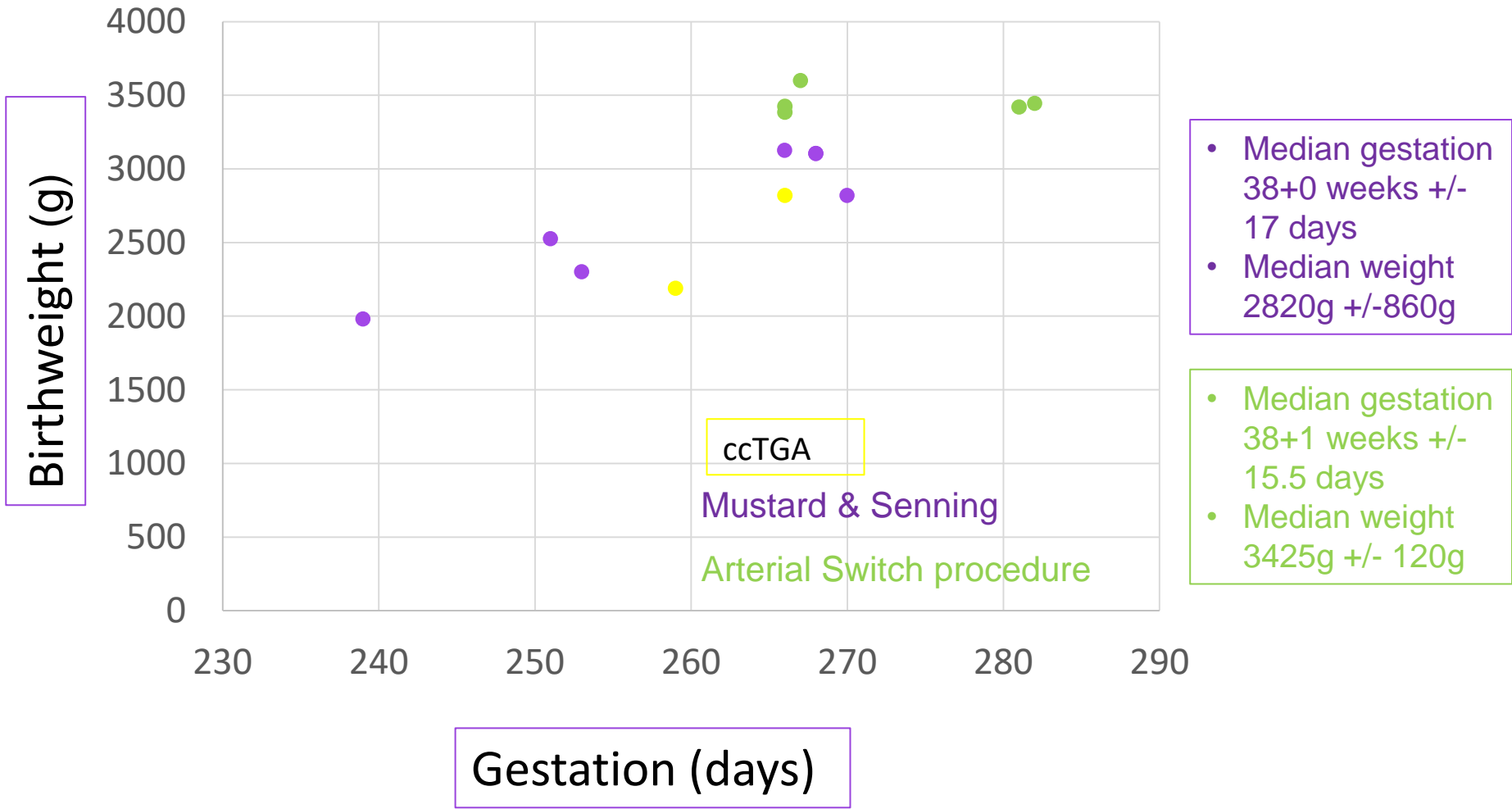
No fetal complications occurred in the arterial switch group.

- 1st trimester miscarriage
- SGA
- Pre-term labour
- Placental abruption

Mode of delivery



Birth weight



Birthweight (g)

Gestation (days)

- Median gestation 38+0 weeks +/- 17 days
- Median weight 2820g +/- 860g

- Median gestation 38+1 weeks +/- 15.5 days
- Median weight 3425g +/- 120g

ccTGA
Mustard & Senning
Arterial Switch procedure

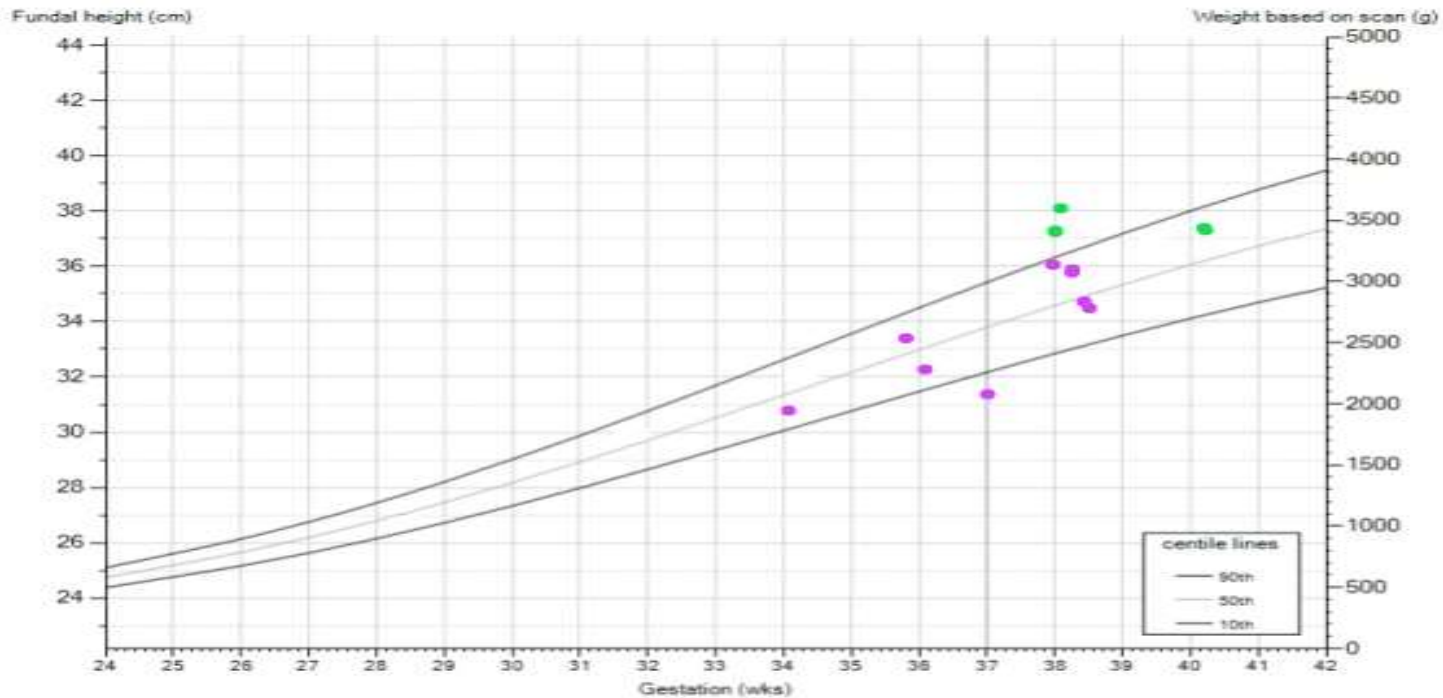
Conclusion

- The results of the combined ANC show good maternal and neonatal outcomes.
- These are largely related to relatively stable and sustained ventricular function.
- Arterial switch associated with normal birth weight
- These women are high risk and should be counselled accordingly however, successful vaginal deliveries are possible with multi-disciplinary input in specialist units.

Questions?

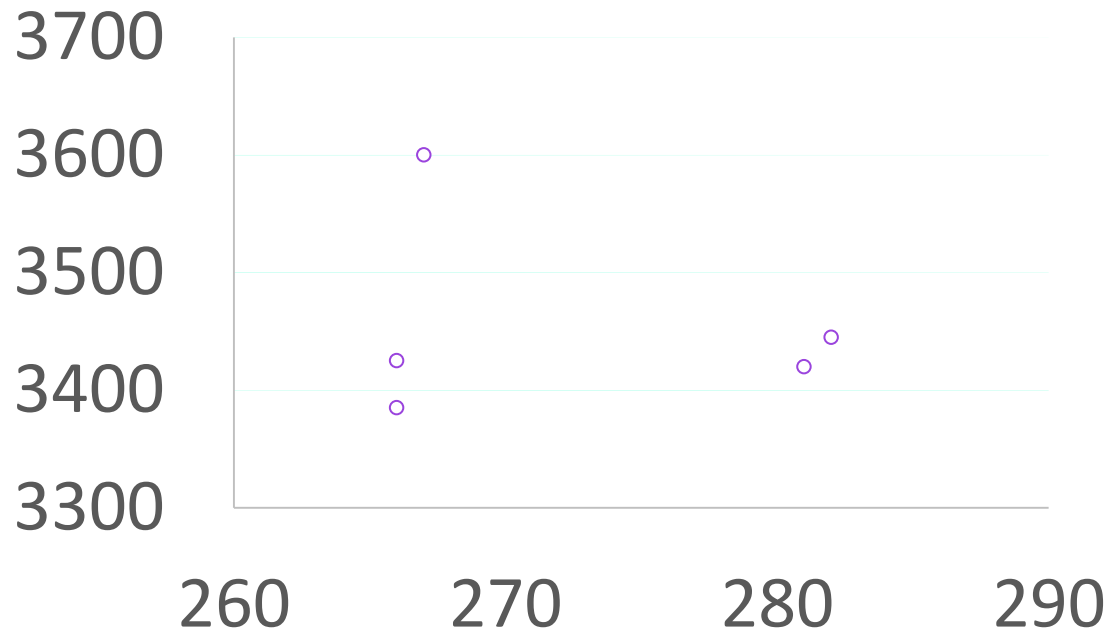


Birthweight centiles



Birthweight-Arterial Switch procedure

Birthweight (g)

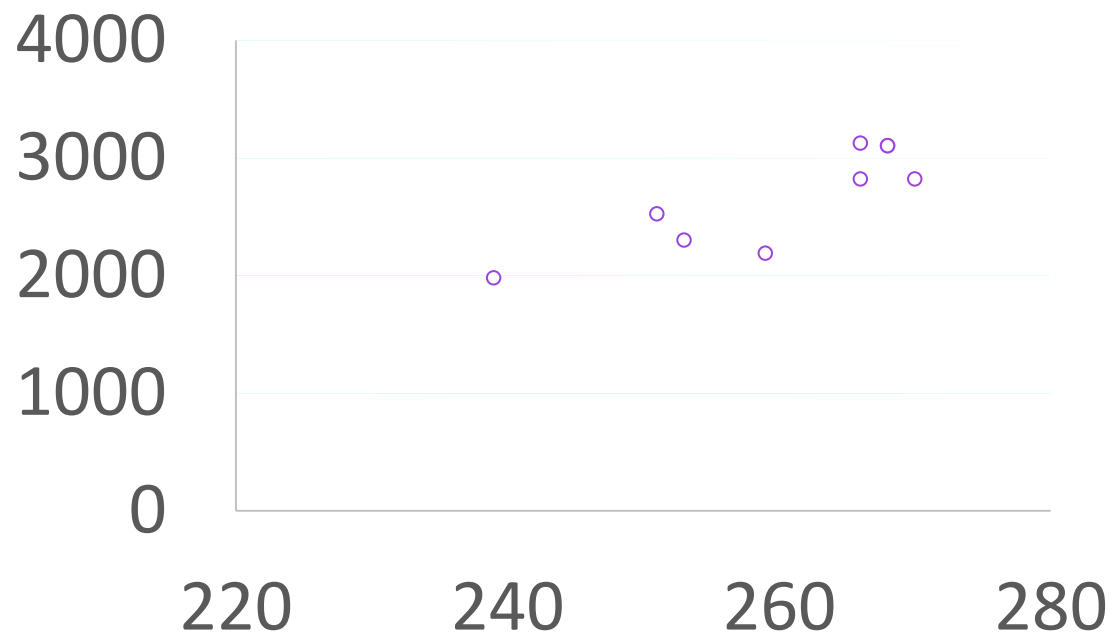


Gestation (days)

- Median gestation 38+1 weeks +/- 15.5 days
- Median weight 3425g +/- 120g

Birthweight-ccTGA, Mustard & Senning

Birthweight (g)

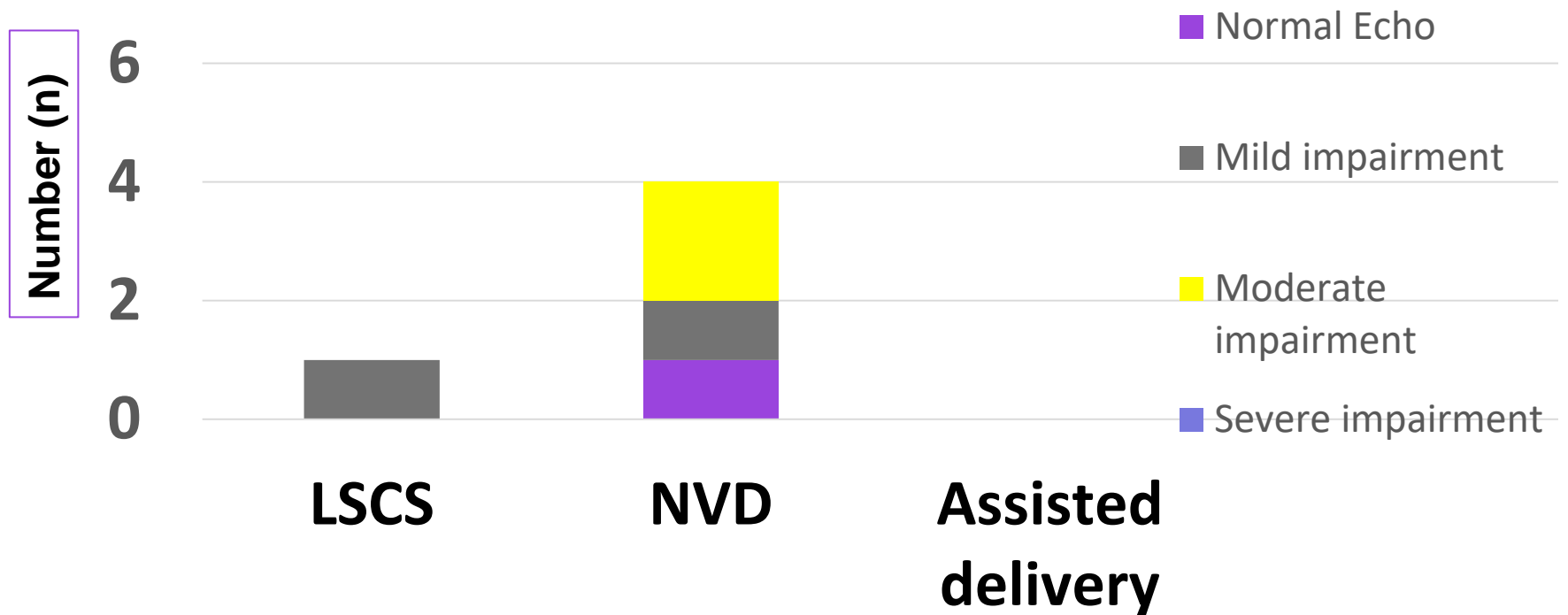


Gestation

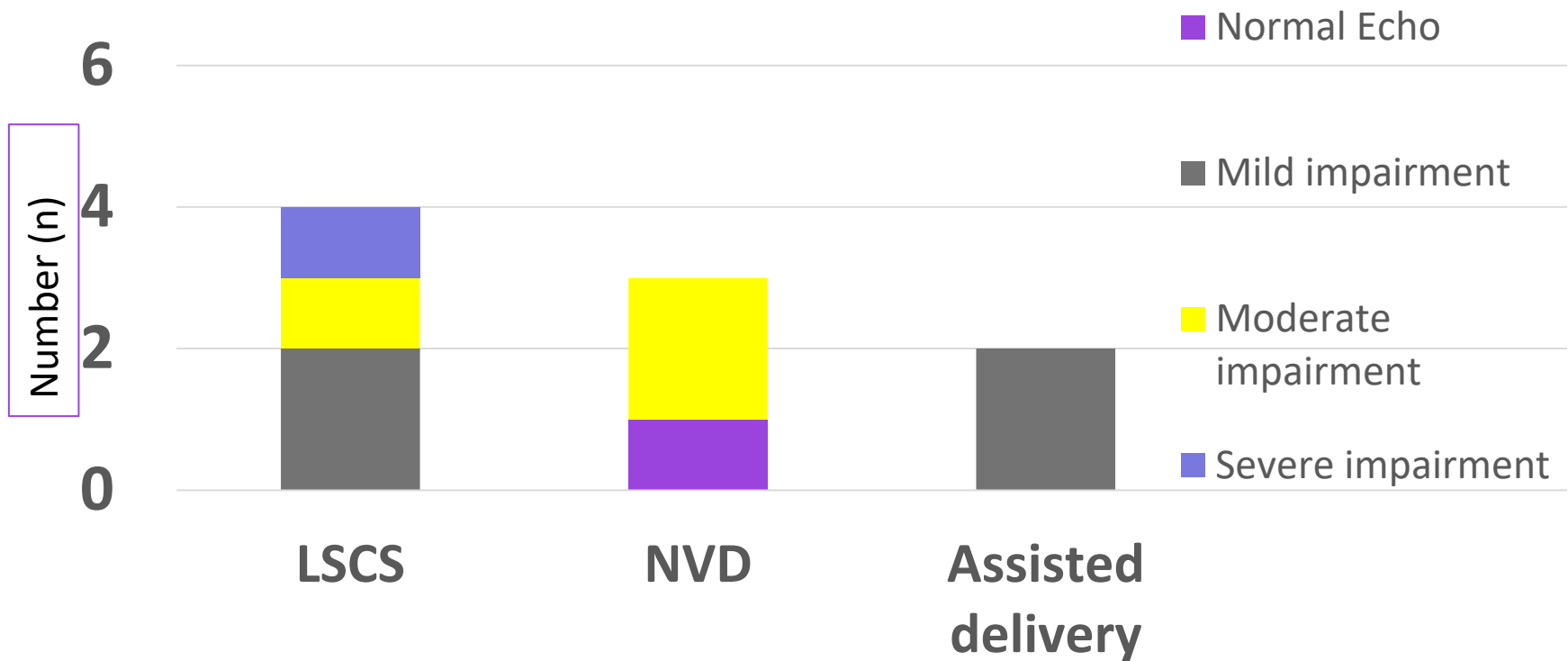
- Median gestation 38+0 weeks +/- 17 days
- Median weight 2820g +/- 860g

Gestation (days)	Birthweight (g)
268	3105
270	2820
251	2525
253	2300
266	3125
239	1980
259	2190
266	2820
268	3105
282	3445
267	3600
281	3420
266	3385
266	3425

Mode of delivery- Arterial Switch Procedure



Mode of delivery-ccTGA, Mustard & Senning



Mode of delivery- Arterial Switch Procedure

